



# NATIONAL OPEN NEWS

Las Vegas International Chess Festival

Volume 2016 • Issue 1

Editor: Bill Brock

## WGM Nebolsina wins 2016 U. S. Women's Open

## Defending National Open Champ Dreev wins simultaneous 24-0-0

WGM Vera Nebolsina of New York won the opening event of the Las Vegas International Chess Festival, the 2016 U. S. Women's Open, with a 4½-½ score. The U. S. Women's Open was held June 22-23 here at the Westgate Las Vegas Resort and Casino, WGM Carla Heredia of Texas, WFM Joanna Liu of Arizona, and WFM Chouchanik Apriapetian of Washington tied for second with 4-1 scores.



The tense fourth-round game between Nebolsina and Heredia was crucial in determining the top places:

**WGM Vera Nebolsina – WGM Carla Heredia [D11]**  
U. S. Women's Open,  
23.06.2016

1.Nf3 d5 2.g3 Nf6 3.Bg2 c6 4.d4 Bf5 5.c4 e6 6.Nc3 h6 7.Qb3 Qb6 8.c5 Qxb3 9.axb3 Nbd7 10.b4 a6 11.b5 cxb5

12.Nxb5 Rc8 13.Nc3 Be7 14.Nd2 Nb8! 15.f3?! Nc6! 16.e4 Nxd4!



Heredia is on the verge of a quick victory, but Nebolsina finds moves to stay in the game.

17.Ra4! Nc2+ 18.Ke2 Bg6 19.Nb3 d4 20.Nd1 Bxc5?!

Stockfish suggests 20...Nd7 with a huge Black advantage.



21.Rc4! d3+ 22.Kxd3 Nb4+ 23.Kc3 b6 24.Rxb4

The endgame is now very pleasant for White...

24...Bxb4+ 25.Kxb4 0-0 26.Nc3 Nd7 27.f4 Rfd8 28.Be3 f6 29.Rd1 Bf7 30.Bh3 Kf8 31.Ra1 a5+ 32.Ka3 Ke7 33.Nd4 Nc5 34.Bf1 Be8 35.Nb3 Nxb3 36.Kxb3 Rb8 37.Nb5

and White converted this endgame in another 16 moves. 1-0

The championship crosstable and list of all prizewinners appears on page 2.

This is the third consecutive year that the U. S. Women's Open, founded by US Chess Past President Ruth Haring and nurtured by US Women's Committee member Janelle Losoff, has been run in conjunction with the Las Vegas International Chess Festival.

Grandmaster Alexey Dreev, the 2015 National Open champion, won all 24 of his games against powerful opposition in his Thursday afternoon simultaneous exhibition.

**GM Alexey Dreev (2768) – Philip Irwin (1819) [D17]**  
**Simultaneous, 23.06.2016**

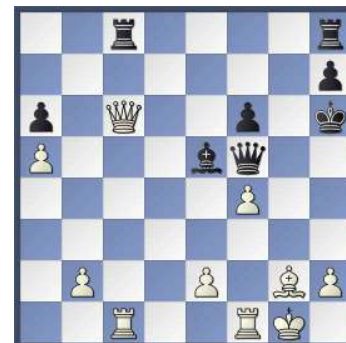
1.d4 d5 2.c4 c6 3.Nf3 Nf6 4.Nc3 dxc4 5.a4 Bf5 6.Ne5 Nbd7 7.Nxc4 Qc7 8.g3 e5 9.dxe5 Nxe5 10.Bf4 Nfd7 11.Bg2 f6

Perhaps saner than 11...g5!?

12.0-0 g5 13.Bxe5 Nxe5 14.Nxe5 Qxe5 15.a5 a6 16.Qb3 Qc7 17.Rac1 Bd6 18.Nd5 Qf7 19.Qe3+ Kf8 20.Qb6 Kg7 21.f4 Qd7? 22.Ne3! gxf4 23.Nxf5+ Qxf5 24.Qxb7+

Objectively, White is winning, but Irwin starts playing like a house.

24...Kh6 25.Qxc6 Be5 26.gxf4 Rac8!



Seeing his winning chances slipping away, Dreev gives up the queen.

27.fxg5 Rxc6 28.Rxc6 Qxe5 29.Rcxf6+ Kg7 30.Rxa6 Qe3+



Defending National Open Champion GM Alexey Dreev

31.Kh1 Rc8 32.Rd6 Rc1! 33.Rdd1 Rxd1 34.Rxd1 Qxe2 35.Rg1 Qxb2 36.a6 Qb6

(Continued on page 2)

2016 U. S. Women's Open

No.	Ttl	Name	Rate	Pts	Rnd1	Rnd2	Rnd3	Rnd4	Rnd5	
1	WGM	Nebolsina, Vera	2354	4.5	W 12	W 15	W 8	W 2	D 4	1st \$500
2	WGM	Heredia, Carla	2237	4.0	W 13	W 9	W 6	L 1	W 7	2nd/3rd \$167
3	WFM	Airapetian, Chouchanik	2078	4.0	W 18	L 6	W 17	W 16	W 10	2nd/3rd \$167
4	WFM	Liu, Joanna	2073	4.0	W 19	W 10	D 7	W 5	D 1	2nd/3rd \$167
5		Walsh, Sara	1894	3.5	D 28	W 25	W 11	L 4	W 13	U2000 \$100
6	WFM	Zhao, Annie	1891	3.5	W 30	W 3	L 2	D 12	W 17	U2000 \$100
7		Zlotchevsky, Nicole	1792	3.5	W 24	W 14	D 4	W 8	L 2	U1800 \$200
8	WCM	Cervantes, Thalia	2066	3.0	W 27	W 26	L 1	L 7	W 22	
9	WIM	Haring, Ruth	1954	3.0	W 20	L 2	W 18	L 13	W 24	
10		Ishee, Jennifer	1835	3.0	W 23	L 4	W 19	W 22	L 3	
11		Cao, Claire	1825	3.0	-H-	W 28	L 5	W 26	D 12	
12		Liu, Kimberly	1768	3.0	L 1	W 21	W 24	D 6	D 11	
13		Chen, Evelyn	1703	3.0	L 2	W 27	W 14	W 9	L 5	
14		Deng, Queena	2050	2.5	W 22	L 7	L 13	W 31	D 16	
15		Olsen-Mills, Jamie	1913	2.5	W 21	L 1	L 22	W 29	D 19	
16		Zemke, Christine	1826	2.5	D 29	W 32	-H-	L 3	D 14	
17		Zeng, Sheena		2.5	-H-	W 29	L 3	W 28	L 6	
18	WCM	Lopez Sanchez, A	1666	2.5	L 3	W 30	L 9	D 23	W 28	
19		Liu, Isabella	1566	2.5	L 4	W 23	L 10	W 25	D 15	U1600 \$67
20		Cunningham, Carissa	1509	2.5	L 9	L 22	D 21	W 32	W 29	U1600 \$67
21		Dyer, Elizabeth	1493	2.5	L 15	L 12	D 20	W 30	W 26	U1600 \$67
22		Galsandorj, Enkhchimeg	1588	2.0	L 14	W 20	W 15	L 10	L 8	
23		Chen, Megan	1167	2.0	L 10	L 19	-B-	D 18	D 27	U1400/U1200 \$134
24		Romero, Annabelle	1142	2.0	L 7	-B-	L 12	W 27	L 9	U1400/U1200 \$134
25		Bulos, Nathalie B	1014	2.0	-B-	L 5	L 28	L 19	-X-	U1400/U1200 \$134
26		Stiger, Alex	1786	1.5	W 31	L 8	-H-	L 11	L 21	
27		Dong, Jessica	1531	1.5	L 8	L 13	W 30	L 24	D 23	
28		Zhao, Vivian	1386	1.5	D 5	L 11	W 25	L 17	L 18	
29		Lee, Monika	1164	1.5	D 16	L 17	W 32	L 15	L 20	
30		Castro, Bria	1426	1.0	L 6	L 18	L 27	L 21	W 32	
31		Monzon, Yasmin		1.0	L 26	-H-	-H-	L 14	-F-	



37.Be4+ Kh6 38.Bb7 Qf2  
 39.Ra1 Qb2 40.Rf1 Qb6  
 41.Kg2 Qb2+ 42.Rf2 Qb6  
 43.Kf3 Qf6+ 44.Ke4 Qe6+  
 45.Kd3 Qb3+ 46.Ke4 Qe6+  
 47.Kd3 Qb3+ 48.Kd4 Qd1+  
 49.Ke3 Qc1+ 50.Rd2 Qe1+  
 51.Kd3 Qb1+ 52.Kc3 Qa1+ 0  
 53.Kb3 Qb1+ 54.Rb2 Qd1+

55.Rc2 Qb1+ 56.Kc3 Qa1+  
 57.Kc4 Qa4+ 58.Kd3 Qb3+  
 59.Rc3 Qb1+ 60.Kc4 Qf1+  
 61.Kc5 Qf2+ 62.Kc4 Qa2+  
 63.Kb4 Qb2+ 64.Rb3 Qd2+  
 65.Kb5 Qe2+ 66.Kb4 Qc2  
 67.h4 Qh2 68.Kc4 Qe2+  
 69.Rd3 Qc2+ 70.Kd4 Qf2+  
 71.Kd5 Qf5+ 72.Kc4 Qf4+  
 73.Kb5 Qe5+ 74.Rd5 Qb2+  
 75.Kc6 Qc3+ 76.Re5 Qf6+  
 77.Kc7

Unfortunately, I can't decipher the scoresheet from here, but White won this drawn position after a blunder. Great defensive effort by Philip Irwin and great determination by GM Dreev! 1-

**Hello from Chicago!**

The National Open in Vegas was founded by Chicagoan Fred Gruenberg, and Al & Janelle Losoff are native Chicagoans. Although I haven't played in the National Open since 1999, visiting with old friends makes me feel I'm at my hometown club.

\*\*\*

We lost two grandmasters important to the chess world and to the National Open: look for remembrances of Walter Browne and Viktor Korchnoi in this weekend's newsletters.—Bill Brock

Saturday & Sunday 10 p.m.  
 Ballroom D

**BLITZ SECTIONALS**

Entry Fee \$30 — Register by 9:30 p.m.

USCF Blitz Rated  
 \*\*\*

Monday 10 a.m.  
 Ballroom F

**U. S. GAME/10  
 CHAMPIONSHIP**

**\$7,500 PRIZE FUND BASED ON 100**

EF \$100 — Register by 9:30 a.m.  
 USCF Quick & FIDE Rapid Rated

## Bachmann Blitzes Browne Memorial

GM Axel Bachmann of Paraguay won the inaugural Walter Shawn Browne Memorial Blitz Thursday night, scoring 12-2 against world-class competition and earning \$1,000 for the evening.

The following game between Bachmann (right in photo) and Timur Gareev (left) is a delightful tactical battle.

**GM Timur Gareev (2740) – GM Axel Bachmann (2692)**

[A45]

**Walter Browne Memorial Blitz**

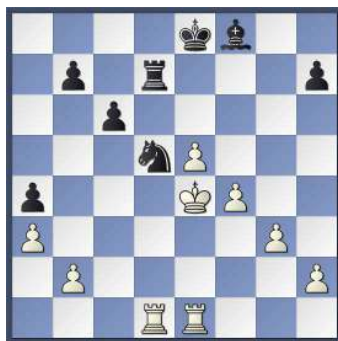
23.06.2016

1.d4 Nf6 2.Bg5 d5 3.e3 Bf5  
4.Bxf6 gxf6 5.c4 dxc4 6.Bxc4  
Bg7 7.Nc3 Nd7 8.Nf3 Nb6  
9.Nh4 Bg6 10.Bb3 e6 11.Qf3  
c6 12.0-0 f5 13.g3 Qg5 14.Ng2  
Bh5 15.Qf4 Bh6 16.Qc7 Qe7  
17.Qe5 Rg8 18.Nf4 Bf3  
19.Rfe1 Rc8 20.Nxe6 fxe6  
21.Bxe6 Rf8 22.Bxc8 Qxe5  
23.dxe5 Nxc8 24.Ne2 Bg7  
25.Nd4 Bd5 26.f4 Nb6



27.Nxf5! Rxf5 28.e4 Rf7  
29.exd5 Nxd5 30.Rad1 a5

31.Kg2 Bf8 32.Kf3 a4 33.Ke4  
Rd7 34.a3



Acsi

34...Bxa3! 35.e6? Rd8  
36.bxa3 Nc3+ 37.Ke5 Rxd1  
38.Rxd1 Nxd1 39.f5 Nc3 40.f6  
b5 41.Kd6 Ne4+ 42.Ke5 Nxf6  
43.Kxf6 b4 44.Kg7 0-1

### Browne Memorial Prizewinners (Open Section)

1<sup>st</sup>: GM Axel Bachmann, 12-2 \$1,000  
2<sup>nd</sup> GM Vasif Durarbayli, 11½-2½ \$ 500  
3<sup>rd</sup> GM Gata Kamsky, 11-3 \$ 300

#### Under 2400

1<sup>st</sup>-3<sup>rd</sup> Aaron Grabinsky, IM Raymond  
Kaufman, Fernando Viano each  
Da Costa, 9-3 \$ 100

#### Under 2300

Rubens Cezila, Jr., 9-3 \$ 275

#### Under 2200

FM Bernardo Vainzoff \$ 250

#### Under 2100

Nesamani, Vigneshwaran \$ 225

#### Under 2000

Lucia, Robert, Bayaraa Chinguun, each  
& Andrey Malkhasyan 6½-5½ \$ 67



### Browne Memorial Prizewinners (Reserve Section)

1<sup>st</sup> Jonathan Doran \$500  
2<sup>nd</sup> Michael Hosford \$300  
3<sup>rd</sup> David Dashoff \$150

#### Under 1700

=1 Christian Silvestri each  
& Vyom Vidharthi \$125

#### Under 1600

=1 Justin Weinzwieg & each  
Nicholas Pearson \$100

#### Under 1500

1<sup>st</sup> Mark Huang \$175

#### Under 1400

=1 Joseph Levine & each  
Sophie Velea \$ 75

#### Under 1300

1<sup>st</sup> Jonah Mason \$125

**Under 1200** 1<sup>st</sup> Victory Stewart \$100

# INTERNATIONAL YOUTH CHESS CHAMPIONSHIP

HOSTED BY **KAYDEN TROFF** – ONE OF AMERICA’S YOUNGEST GRANDMASTERS

Paradise Event Center South

**Friday**

- 10:00 a.m. Youth Trophy Tournament
- 5:15 p.m. Awards Presentation
- 6:30 p.m. Youth Blitz

**Saturday**

- 8:30 a.m. Late Registration (to 9:00 a.m.)
- 9:45 a.m. Opening Ceremony
- 10:00 a.m., 1:00 p.m., 3:30 p.m. Rounds 1–3
- 3:00 p.m. GM Kayden Troff Autograph Session
- 6:00 p.m. Puzzle Solving Competition
- 6:30 p.m. GM Vera Nebolsina Simul for Kids

**Sunday**

- 9:30 a.m. Side Event Awards
- 10:00 a.m., 1:00 p.m., 3:30 p.m. Rounds 4–6
- 6:30 p.m. Closing Ceremony



**Entry Fees**

- Trophy Tournament: \$50
- Youth Championship: \$120
- Youth Blitz: \$25
- Puzzle Solving: \$25
- WGM Vera Nebolsina Simul: \$25

**Time Controls**

- Championship: Game/60 delay 5
- Trophy Tournament: Game/25 delay 5
- Blitz: Game/5 no delay

*Delay Clocks are preferred and delay must be set.*

\$20 change fee for team or section changes after Round 1 starts. No team additions allowed after Saturday 5:00 p.m.

## Free Lectures

Conference Room 1

- |            |   |                       |
|------------|---|-----------------------|
| <b>Fri</b> | 3:30 p.m. <b>Kamsky on Chess</b>                | <i>GM Gata Kamsky</i> |
|            | 8 p.m. <b>The Bishop Pair in Mating Attacks</b> | <i>GM Ron Henley</i>  |
| <b>Sat</b> | 3 p.m. <b>A Tribute to GM Walter Browne</b>     | <i>GM Ron Henley</i>  |
| <b>Sun</b> | 1 p.m. <b>The Bishop Pair in the Endgame</b>    | <i>GM Ron Henley</i>  |

## Analysis of Your Games

Conference Room 5

*GM Varuzhan Akobian*

Sessions start 2 Hours after the start of each Round of the **National Open** and run for 2 to 3 hours.

**National Open** players age 14 and under are eligible for the **FREDDIE** best game award. Those who wish to have a game considered must bring it to one of first five analysis sessions. Only rounds 1 through 5 will be considered.

**COMMEMORATIVE  
DVD OR FLASH DRIVE**

Hundreds of games, photos, and more will be **mailed free** to every participant shortly after the Chess Festival.



**DON'T BE LATE!**

Players who arrive at the board more than 30 minutes after the round has started will be forfeited and removed from the tournament. They will be reinstated only on request.

**ROCHESTER CHESS**

**CHESS4LESS**

Ballroom E

- Thu 6:00 p.m. – 9:00 p.m.
- Fri – Sun 9:00 a.m. – 11:00 p.m.

## Tournament Chess Store

Ballroom E

### Get Better at Chess Now Guaranteed!

(Roman, Foxy, Polgar, Karpov, Ginger GM)

**10 EASY WAYS TO GET BETTER AT CHESS EASILY EXPLAINED VOLUME 2 FOR THE INTERMEDIATE PLAYER RATED 1000-1800 (BY IM ANDREW MARTIN)**

- 1. THINK ABOUT EVERY STRUCTURE
- 2. DETERMINE THE PIECES
- 3. WINNING WING POSITION
- 4. ALWAYS TO CONTROL YOUR KING
- 5. NEVER TO MOVE YOUR ROOKS
- 6. NEVER TO PLAY AGAINST EQUAL OPPONENTS
- 7. NEVER TO PLAY AGAINST A STRONGER OPPONENT
- 8. IN THE ENDGAME
- 9. DEVELOP YOUR KING SAFELY
- 10. CHECKS A PRACTICAL GAME

## Dvd Sale \$10 Each

While Supplies Last

Chessdvd.com

Bonus Free Digital download No purchase required

Call 1-877-chessdvd (1-877-243-7738) email sales@chessdvd.com

1 Free Digital Download over 400 to choose from mention (Promo code Vegas2016)