



702-560-0955

www.VegasChessFestival.com

Welcome to the 2015 edition of the Las Vegas International Chess Festival and the National Open 50th Anniversary Edition.

We want to welcome the talented kids playing in the International Youth Championship hosted by Annie Wang one of America's youngest masters.

Don't miss the free lectures in Conference room 11

Friday

3:00 PM Kamsky on Chess by GM Gata Kamsky

4:00 PM Power of the Sicilian by GM Walter Browne

8:00 PM Melik Teaches Chess by GM Melikset Khachiyani

G/10 won by GM Nyzhnyk



GM Illia Nyzhnyk

No.	Ttl Name	St	Rate	Pts
1	GM Nyzhnyk, Illia	MO	2746	7.0
2	GM Dreev, Aleksey	AZ	2756	6.5
3	GM Kamsky, Gata	NY	2755	6.5
4	IM Jayaram, Ashwin	MO	2561	6.5
5	GM Lenderman, Aleksandr	NY	2731	6.0
6	GM Felgaer, Ruben	FR	2671	6.0
7	GM Ghaem Naghami, Ehsan	IRI	2623	6.0
8	GM Khachiyani, Melik	CA	2603	6.0
9	FM Wheeler, Cameron	CA	2411	6.0
10	Grabinsky, Aaron	OR	2329	6.0

Walter Browne Simul

A great simul with many interesting games and battles. The final result 20 ½ which included 19 wins 3 draws and no losses.

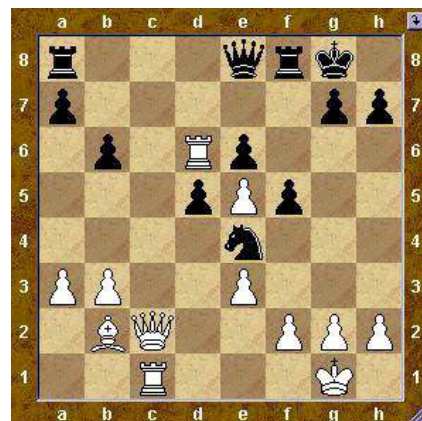
Here is one of the drawn games:

GM Browne vs Dylan Quercia

1.d4 Nf6 2.c4 e6 3.Nf3 Bb4+ 4.Nbd2 O-O 5.a3 Bxd2+ 6.Qxd2 Ne4 7.Qc2 f5 8.e3 b6 9.Bd3 d5 10.O-O Ba6 11.b3 Nd7 12.Bb2 Ndf6 13.Ne5 Nd6 14.Rac1 Qe8 15.c5 Bxd3 16.Qxd3 Nf7 17.cxb6 cxb6 18.Rc7 Qd8 19.Rfc1 Nxe5 20.dxe5 Ne4 21.Qc2 Nc5 22.Rc6 Qe8 23.Rd6 Ne4 1/2-1/2

VOLUME 2015 – ISSUE 1
EDITOR: Rory Valle

Final Position



Here is another drawn game from the GM Browne simul:

GM Browne vs Alan Becker

1.e4 c5 2.Nf3 d6 3.d4 cxd4 4.Nxd4 Nf6 5.Nc3 a6 6.f3 e5 7.Nb3 Be7 8.Be3 Be6 9.Nd5 Nxd5 10.exd5 Bf5 11.Bd3 Bxd3 12.Qxd3 O-O 13.O-O Nd7 14.c4 b6 15.Nd2 f5 16.b4 Qc7 17.Rac1 a5 18.a3 g6 19.Rfd1 axb4 20.axb4 Rfe8 21.Qb3 Qb7 22.Ra1 Bf8 23.Ra4 b5 24.Ra5 bxc4 25.Nxc4 Rxa5 26.Nxa5 Qb5 27.Nc6 Ra8 28.Qd3 Qxd3 29.Rxd3 Ra1+ 30.Kf2 Rb1 31.Ke2 Bg7 32.Rd1 Rb2+ 1/2-1/2

Final Position



Here is a game where it seems Black missed a mating attack against the GM:

GM Browne vs Steve Baker

1.d4 d5 2.c4 Nc6 3.cxd5 Qxd5
4.Nf3 e5 5.Nc3 Bb4 6.Bd2 Bxc3
7.Bxc3 e4 8.Ne5 e3 9.f3 Nf6
10.g3 Be6 11.Bg2 O-O-O 12.Nxc6
Qxc6 13.O-O Nd5 14.Rc1 Qd7
15.b4 Bh3 16.a4 h5 17.Be1 h4
18.Rc5 hxg3 19.Bxg3 Bxg2
20.Kxg2

Now how many of you would play the following move against a GM in a simul?



Rxh2+!

Amazing! The GM is busted after this move! Can you see the rest of the combination?

21.Bxh2 Rh8 22.Rh1

Now it is MATE in 8 moves! Can you see the moves? If not let us see what happened in the game:

Qh3+ 23.Kg1

Now it is mate in 7!

Rh6??

Throwing away the win! Correct was 23.....Qh4 24. Qf1 Rh6
25. Rc6 bxc6 26. Qg2 Qe1 27.
Qf1 Rg6 28. Bg3 Qxg3 28. Qg2
29. Qxg2#

24.Qc2! Now the table has been turned. The GM is winning!

Rg6+ 25.Qxg6 fxc6 26.Bxc7 1-0

This is the final game of the simul, the last man standing was Childress. Walter had a slight edge from the opening but kept up the pressure until he won.



GM Walter Browne

GM Browne vs Jason Childress

1.d4 d5 2.c4 e6 3.Nc3 c5 4.cxd5
exd5 5.Nf3 Nc6 6.g3 h6 7.Bg2
Nf6 8.O-O Be7 9.dxc5 Bxc5
10.Na4 Be7 11.Be3 O-O 12.Rc1
Qa5 13.a3 Bd7 14.Nc5 Be8
15.Nd4



Here a better move for black was 15.....Nxd4 but GM still has a slight edge.

Bxc5

But after this move the GM sees the correct continuation and now has a bigger edge in the game.

16.Nb3 Bxe3

16.....Qd8 was better than the move chosen by black. Now the Queen has to go.

17.Nxa5



17..... Bxc1 18.Nxc6 Bxc6
19.Qxc1 Rfe8 20.e3 Rac8 21.Qc5
a6 22.Qd4 Rc7 23.Rc1 Ree7 24.f3
Rcd7 25.Bf1 Rd6 26.Bh3 Ne8
27.Qc5 Rc7 28.Qa7 Rf6 29.Bg2
Nd6 30.b3 Rc8 31.a4 Re8 32.Rc3
Nf5 33.Qc5 g6 34.f4 Nd6 35.Bxd5
Ne4 36.Bxe4 Rxe4 37.Rd3 Re8
38.Kf2 Be4 39.Rd6 Rxd6 40.Qxd6
Rc8 41.Qe5 Rc2+ 42.Ke1 f5
43.Qf6 Rxh2 44.Qxg6+ Kh8 45.g4
Rh1+ 46.Kd2 Rh2+ 47.Kc3 Rc2+
48.Kd4 Rc6 49.Qf7 Rd6+ 50.Ke5
Rd5+ 51.Kf6 Rd6+ 52.Ke7 Rc6
53.Qf8+ Kh7 54.gxf5 Bd5 55.f6
Be6 56.Qg7# 1-0

Here is a photo of Uyanga Byambaa who is co-leader with Simone Liao in the US Women's Open:



WFM Uyanga Byambaa



NM Simone Liao:

Simone Liao
vs

Danitza Maccarini Vazquez

1.e4 c5 2.Nc3 a6 3.g4 b5 4.Bg2 Bb7 5.d3 e6 6.g5 Nc6 7.f4 Nd4 8.Nce2 Nxe2 9.Qxe2 Ne7 10.h4 h5 11.Nh3 g6 12.O-O Qc7 13.c3 d6 14.a4 bxa4 15.Rxa4 Qd7 16.Ra1 e5 17.fxe5 dxe5 18.Qf2 Qe6 19.d4 cxd4 20.cxd4 exd4 21.Qxd4 Rh7 22.Nf4 Qg4 23.Be3 Bg7 24.Qb4 Bc6 25.Bc5 Qd7 26.Nd5 Nc8 27.Rad1 a5 28.Qe1 Qb7 29.Qg3 Qb8 30.Nc7+ 1-0



GM Ron Henley



International Youth Championship



International Youth Championship

Here are the standings of the US Women's Open after day one:

1	Liao, Simone	CA	2203	3.0
2	Byambaa, Uyanga	CA	2195	3.0
3	Nguyen, Emily	TX	2089	2.5
4	Inapuri, Ramya Krishna	AZ	2251	2.0
5	Liu, Joanna	AZ	2142	2.0
6	Vazquez Maccarini, Danitza Fer	PR	2093	2.0
7	Christiansen, Natasha	MA	1901	2.0
8	Show, Serafina	CA	1874	2.0
9	Zemke, Christine	HE	1858	2.0
10	Dasari, Samhitha	GA	1739	2.0
11	Grigore, Audrey	NV	1567	2.0
12	Haring, Ruth Inez	CA	1907	1.5
13	Santiago, Naomi	NV	1761	1.0
14	Ghosh, Hiya	CA	1586	1.0
15	Castro, Bria	AZ	1511	1.0
16	Dasari, Srihitha	GA	1391	1.0
17	LeTard, Willow	NM	1320	1.0
18	Lazo, Annie	SWE	1185	1.0
19	McNutt, Kaitlynn L	TX	951	1.0
20	Guzman, Lori Lynn	MN	260	1.0
21	Afandiyeva, Lana	TX		1.0
22	Altamirano, Brenda	CO	1062	0.0



US Women's Champions

In 1972, **Bobby Fischer** faced the Soviet Union in the greatest chess match ever played.

On the board he fought the Cold War.
In his mind he fought his madness.

TOBEY MAGUIRE PETER SARSGAARD LIEV SCHREIBER

PAWN SACRIFICE

COMING TO THEATERS THIS SEPTEMBER

BLICKER STREET FACEBOOK.COM/PAWNSACRIFICEMOVIE



702-560-0955

www.VegasChessFestival.com

POST YOUR RESULTS

Both Players are responsible for reporting results! Please post on the pairing sheet and turn in a score sheet with the result clearly marked and signed by both players.

Electronic Device Policies

Begas Chess Fesitival's electronic device policies and other anti-cheating rules are posted on our website and on pairing boards.

Dropping Out? Need a Bye?

Be sure to sign the sheet at the Registration Desk – nobody wants to sit at an empty board!

Alan & Janelle Losoff

Tournament Organizers

USCF 50th Anniversary NATIONAL OPEN

Time Control 40/90, SD/30,
increment 30

(2-day rounds 1-3 G/40,
increment 5)

Ballroom A – C

2-Day Schedule Pavillion 11

Friday

Round 1 11:00 AM

Round 2 5:30 PM

Saturday

Round 3 10:00 AM

Round 4 4:30 PM

2-Day Round 1 10:00 AM

2-Day Round 2 12:00 PM

2-Day Round 3 2:00 PM

2-Day Round 4 4:30 PM

Sunday

Round 5 10:00 AM

Round 6 4:30 PM

Winner's Circle

Cash Bar 9:00 PM

Ballroom F

Friday

U.S. Women's Open

\$2000 Guaranteed Prize Fund

Round 4 9:00 AM

Round 5 1:30 PM

USCF and FIDE rated

BLITZ SECTIONALS

Saturday 10:00 PM Ballroom F

Entry Fee \$25 – Register by 9:30 PM

USCF Blitz Rated

The Spirits of Chess

Invitational Blitz Tournament

Saturday 10:00 PM Ballroom C

Round Robin

USCF and FIDE Blitz Rated

Spectators Welcome

National Open Blitz

Sunday 10:00 PM Ballroom D

\$3,000 Guaranteed Prize Fund

7 Double Rounds

Entry Fee \$40 – Register by 9:30 PM

USCF and FIDE Blitz Rated